

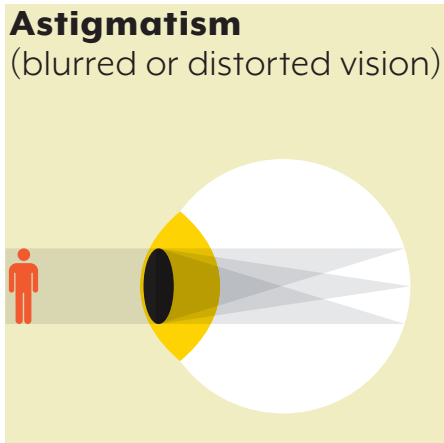
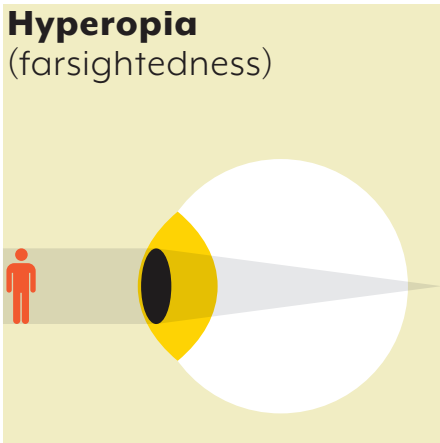
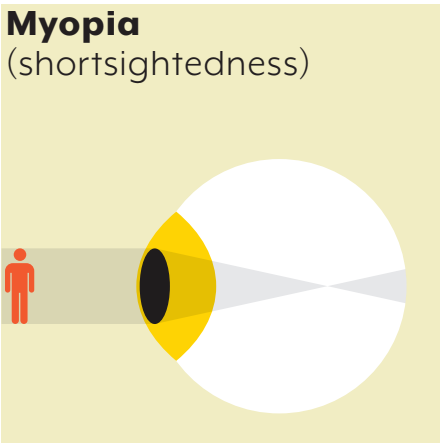


Eyeglasses coverage for distance refractive error

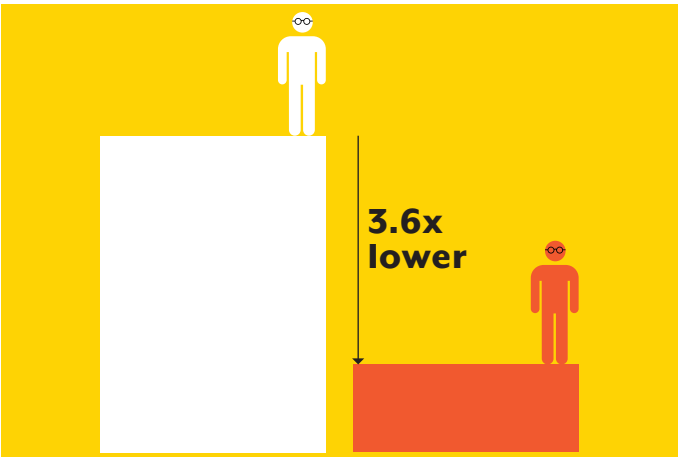
What is distance refractive error?

Distance refractive error is a common vision problem caused by the eye's inability to focus clearly. It's the **leading cause of vision impairment** in both children and adults and easily corrected with eyeglasses.

There are 3 types:



Millions left with vision loss

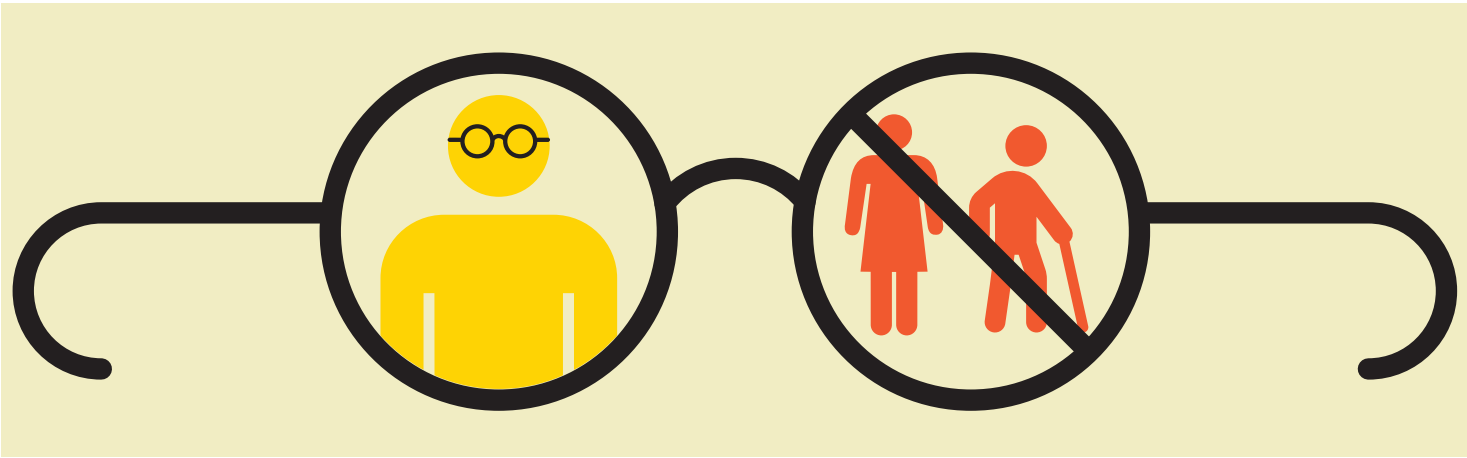


Eyeglasses access is **3.6x lower** in **low-income countries** than in **high-income countries**.



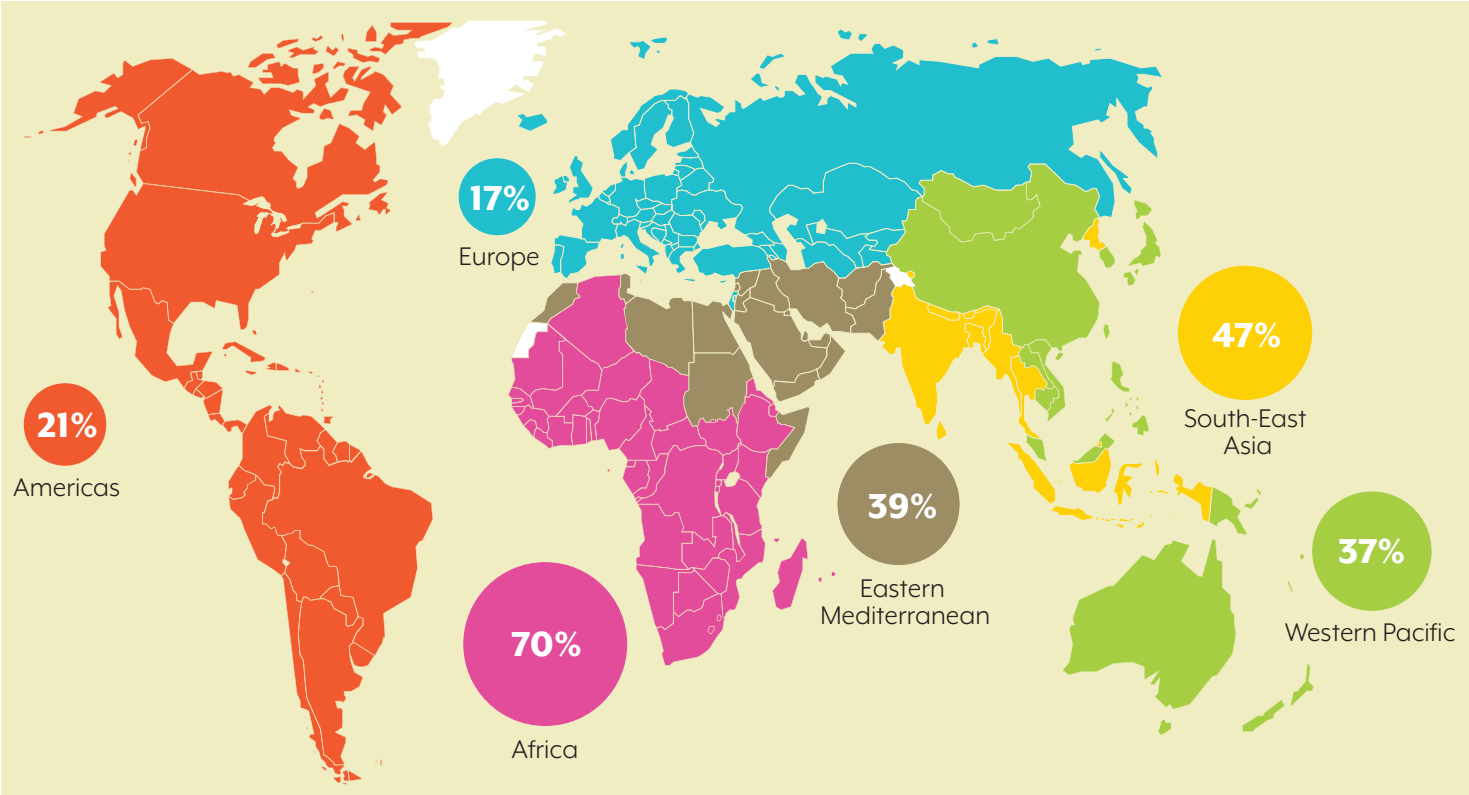
2 out of 3 people in low-income countries who need eyeglasses can't get them.

Eyeglasses access is not equal

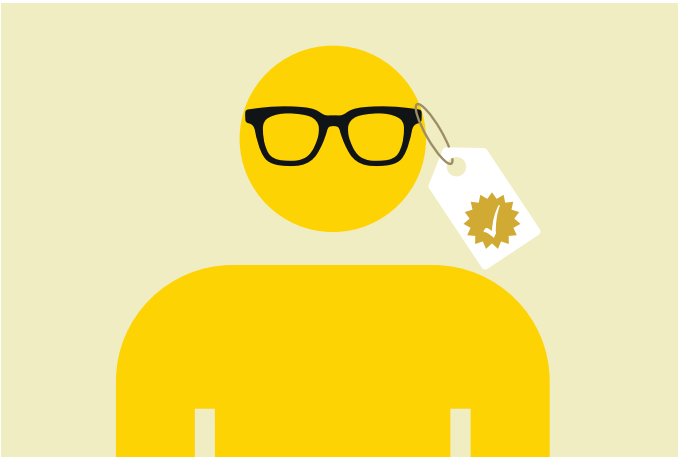


Women and Older people are **less likely** to get the eyeglasses they need and are often left behind.

Eyeglasses **unmet need** by WHO region



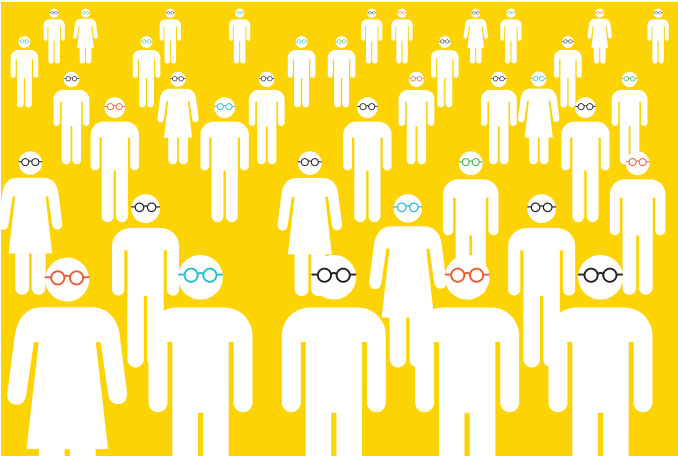
Eye care quality upgraded



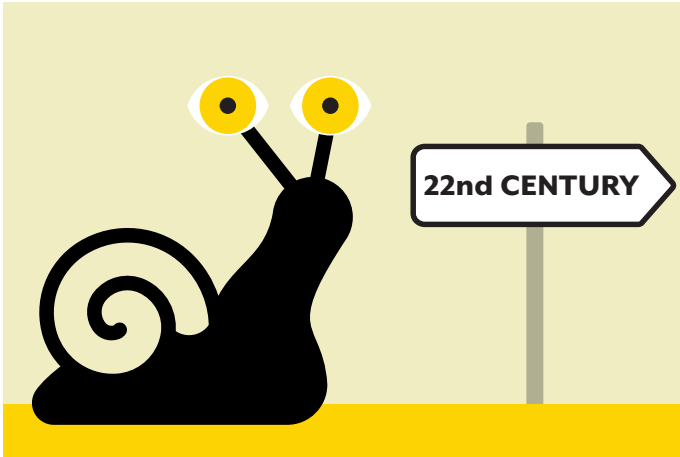
50%
IMPROVEMENT
IN QUALITY
OVER 20 YEARS!

More people than ever are now receiving the **correct prescription** for their eyeglasses — a major leap forward in vision care accuracy and quality.

Rising need, rising response



Despite a surge in refractive errors over the past 20 years, **eyeglasses coverage has expanded.**



But at the current pace, universal access to eyeglasses will not be achieved until the end of the 21st century.

Let’s accelerate progress—clear vision can’t wait.